



Precast concrete wall system provides a unique solution for lower ground living in new build houses.

Bedrooms, bathrooms, gym, cinema or swimming pool; the options are unlimited.

Sunken terraces, patios and lightwells provide natural ventilation, light and access - all of which enhance the lower ground living experience.

From initial enquiry to completion of the build a customer focussed, friendly and professional service is assured.

- guaranteed watertight
- at least 50% faster build than traditional methods
- minimal disruption to neighbouring properties
- basement forms foundation for whole house
- build unaffected by bad weather
- insulated to any standard, including Passiv
- house build can begin once ground floor slab (basement roof) is installed



german engineered basement systems

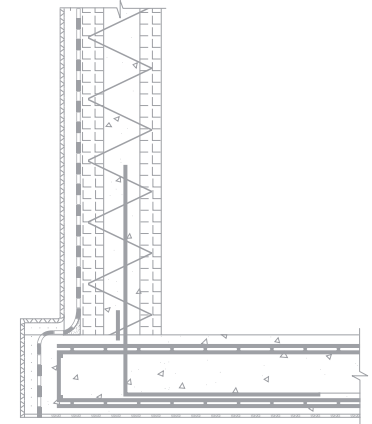
Pre-cast concrete decking
65mm thick

Insitu concrete poured
on site to slab and cavity
of external
twin-wall

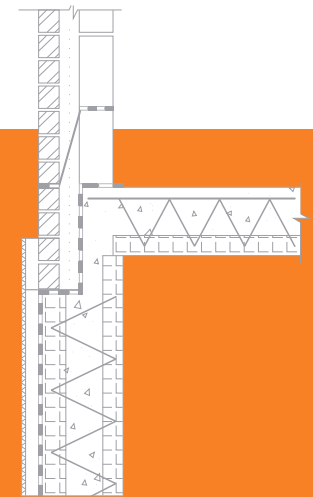
Backfilled earth
Drainage sheet
Insulation
Bitumen tanking

Games /
Cinema Room
Stairwell
Dressing Room
Ensuite
Utility
Guest Suite
Lightwell

Typical section through
foundation slab



Typical section through
ground floor slab



To discuss any aspect of your
project please call:

T 01784 453 775

M 07704 186 251

E info@readymadebasements.co.uk

Basement solutions for:

- Self builders
- Developers
- Builders
- Architects
- Structural Engineers
- Timber frame and SIPS suppliers